

Technical data sheet



Product features

Model	SAP Code	00110049
BR 70/80 G/N	A group of articles - web	Pans



- Bottom material: Stainless steel - suitable for cooking, easy maintenance
- Bottom thickness: 12.00
- Usable volume [l]: 50
- Ignition: Piezo
- Tilting: Manual
- Filling: Mechanical cock
- Type of pan: Tilting
- Basin shape: Practically shaped bathtub spout to minimize spillage
- Protection of controls: IPX4

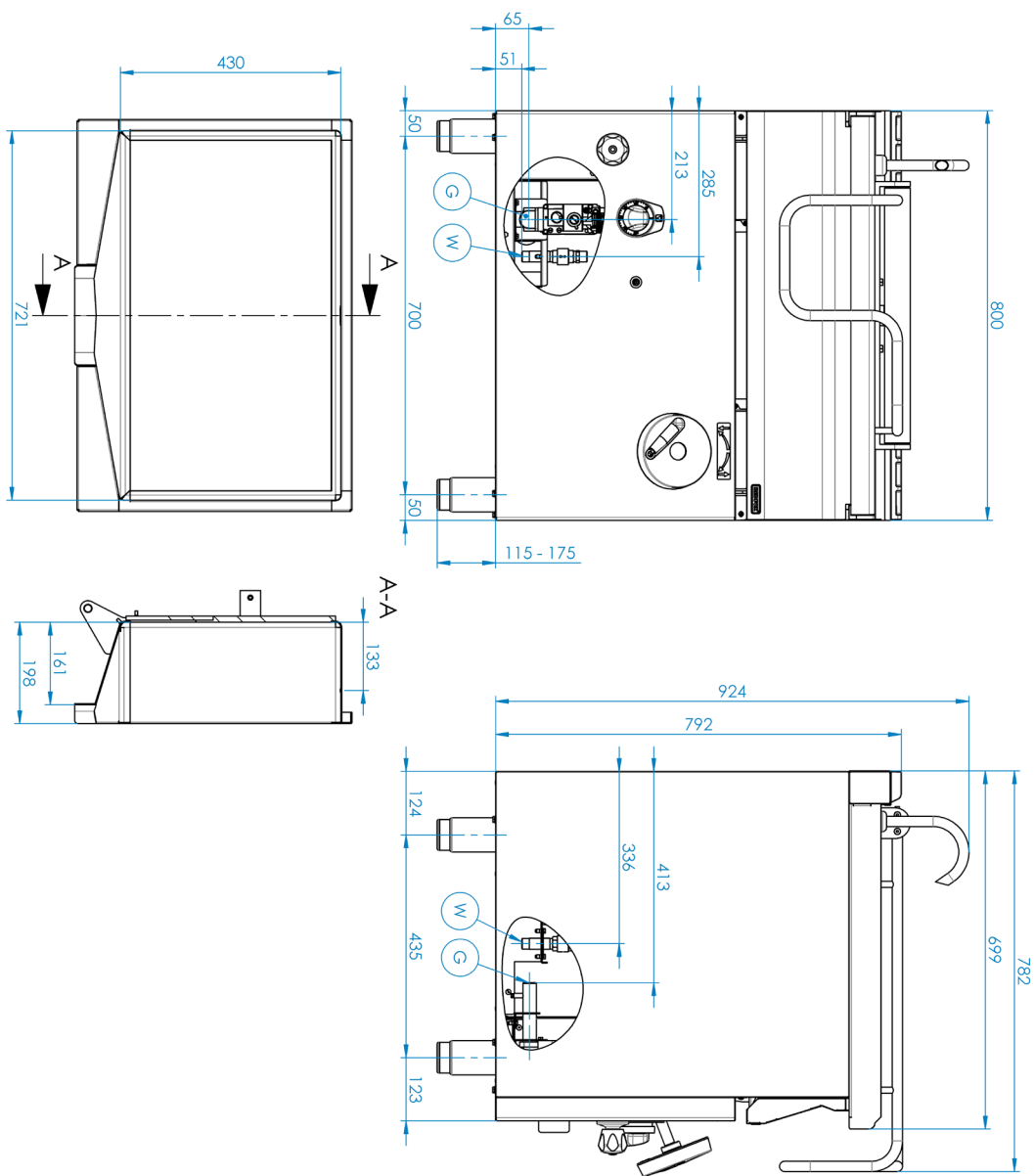
SAP Code	00110049	Power gas [kW]	12.000
Net Width [mm]	860	Type of gas	Natural gas, propane butane
Net Depth [mm]	820	Bottom material	Stainless steel - suitable for cooking, easy maintenance
Net Height [mm]	1079	Usable volume [l]	50
Net Weight [kg]	139.10	Tilting	Manual

Technical data sheet



Technical drawing

Model	SAP Code	00110049
BR 70/80 G/N	A group of articles - web	Pans



Technical data sheet



Product benefits

Model	SAP Code	00110049
BR 70/80 G/N	A group of articles - web	Pans

1 | **Safety element – thermocouple**

safe service for staff
there is no unnecessary gas leakage
long life

- savings on service interventions
- easier and faster operation

2 | **Manual folding system**

maintenance-free system
resistance to splash water
long life

- savings on service interventions
- easy cleaning and maintenance of equipment

3 | **Degree of protection of the control elements IPX4**

maintenance-free system
resistance to splash water
long life

- savings on service interventions
- easy cleaning and maintenance of equipment

4 | **Efficient distribution of heating elements**

perfect heat distribution including corners
fast heating

- saving time when cooking
- saving energy
- long service life

5 | **Stainless steel bottom**

the material does not cut
wear resistance of the material
long life

- savings on service interventions
- easy cleaning and maintenance of equipment

Technical data sheet



Technical parameters

Model	SAP Code	00110049
BR 70/80 G/N	A group of articles - web	Pans

1. SAP Code:

00110049

2. Article group:

RF-Line 700

3. Net Width [mm]:

860

4. Net Depth [mm]:

820

5. Net Height [mm]:

1079

6. Net Weight [kg]:

139.10

7. Gross Width [mm]:

860

8. Gross depth [mm]:

820

9. Gross Height [mm]:

1079

10. Gross Weight [kg]:

152.50

11. Device type:

Gas unit

12. Power gas [kW]:

12.000

13. Ignition:

Piezo

14. Type of gas:

Natural gas, propane butane

15. Protection of controls:

IPX4

16. Material:

AISI 304 top plate, AISI 430 cladding

17. Maximum device temperature [°C]:

300

18. Minimum device temperature [°C]:

50

19. Safety thermostat:

Yes

20. Safety thermostat up to x ° C:

360

21. Adjustable feet:

Yes

22. Tilting:

Manual

23. Bottom thickness:

12.00

24. Bottom material:

Stainless steel - suitable for cooking, easy maintenance

25. Type of pan:

Tilting

26. Usable volume [l]:

50

27. Filling:

Mechanical cock

28. Basin shape:

Practically shaped bathtub spout to minimize spillage

29. Water filling type:

Cold